


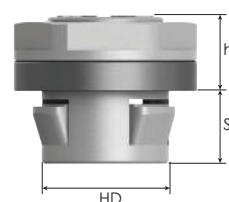
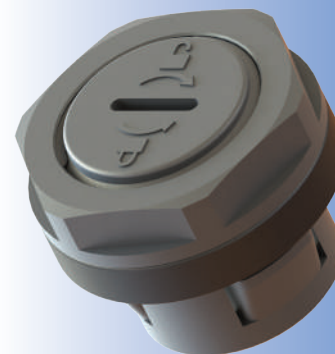
Modular Plugs Polyamide

Polyamide plugs, front-side assembly, without thread

- For standard industrial applications.
- Snap-in assembly for non-threaded holes.
- Lock nuts have threads acc. to EN 60423 (metric) and acc. to DIN 40430 (PG).
- Replacing the modular plug: lock nut can be used for fixing the cable gland.

Technical Details

Material	Body	PA 6 (Polyamide 6)	
	Gasket	CR (Chloroprene)	
	Lock Nut	PA 6 GF 30 (Polyamide 6, 30% Glass Fiber Reinforced)	
Flammability	V2 according to UL94		
Protection Class	IP 68 - 5 Bar, 30 min		
Operating Temperature	Permanent	-20 °C to +100 °C	
	Intermittent	-30 °C to +150 °C	
Remarks	Other colours on request:		
	• RAL 5015 (blue)		
	• RAL 9003 (white)		
	• RAL 3020 (red)		
Approvals	Certificate Number	Standards	
	SERCOVAM RES 107572	acc. to UL514B §8.26.7	



without thread - wall thickness E : 0,5 - 2,0 mm

Size	Snap Length SL mm	Ø SD mm	Hole Ø HD mm	Spanner Width SW mm	Outer Ø D mm	Height h mm	Part Number			Minimum Order Quantity
							RAL 7035	RAL 7001	RAL 9005	
							light grey	grey	black	
M12	9,0	11,9	12,2 - 12,4	18	19,5	12,0	BMPL-1S	BMPL-0S	BMPL-2S	5000
M20	9,0	19,9	20,2 - 20,4	26	28,6	13,5	BMPL-12	BMPL-02	BMPL-22	2500
M32	9,0	31,9	32,2 - 32,4	41	46,1	15,5	BMPL-14	BMPL-04	BMPL-24	1500
PG 16	9,0	22,4	22,7 - 22,9	30	33,0	13,5	BSPL-15	BSPL-05	BSPL-25	2000